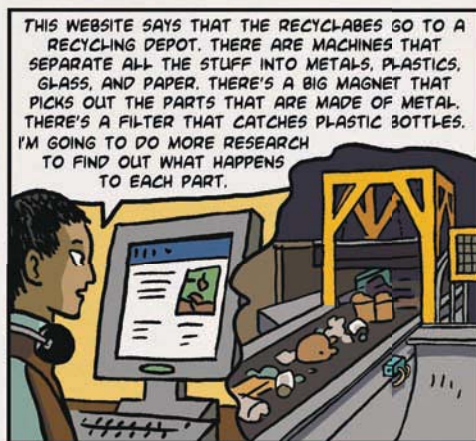


RECYCLING DILEMMA



LINKING TO LITERACY

Critical Literacy

When you read something critically, you analyze the text and look for underlying messages. As you read the cartoon, think about the author's viewpoint.

- 1 The characters are faced with a dilemma. Describe the choice they must make. What does this tell you about their beliefs? Are they believable characters? Why or why not?
- 2 If you were to encounter this dilemma, how would you react? What could you do to make the situation better?
- 3 What message is the author trying to relate to readers?